

MELODY

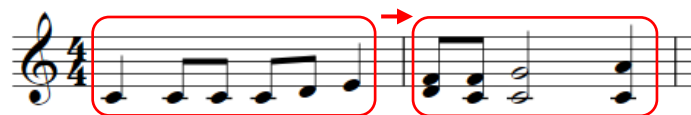
Direction Rising Falling



Repetition Doing the same thing again, without any changes.



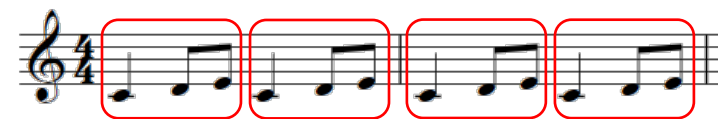
Contrast Doing something completely different.



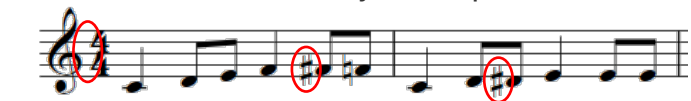
Imitation Doing the same thing again, with some changes (similar).



Ostinato A short repeated idea.



Chromatic The melody uses notes that aren't in the scale / key of the piece.



Conjunct (Moving In Step) Type of movement



Disjunct (Moving In Leaps)



High or low.

Range



Big or Small.



Interval The distance between two notes



*Count the start note & end note

Sequence Doing the same shape idea but at a different pitch.



Triadic The tune is based on notes from the chords / triads.



Ornaments Trills



Mordents



Scale The series of notes in a key that are used to make the melody

